



Sunday 17th May, 2026
Seventh Sunday of Easter
The Sunday after Ascension



'The Ascension' 1821/1822 by John Constable 1776-1837

Come Holy Spirit, fill the hearts of your faithful and kindle in them the fire of your love.

'The Ascension' is one of only three religious paintings by John Constable, commissioned in 1821 by Edward Alston, a brewer from Manningtree who was married to Constable's cousin, responsible for licensing public houses. Alston hoped to curry favour with the local Archdeacon, though he refused to license Alston's hostleries and died in December of the same year. Alston subsequently reneged on the contract at a great financial loss to Constable, though he finished the painting regardless and it is now on display in St Mary's Church, Dedham. You'll know there are a series of Exhibitions in Christchurch Mansion this year, celebrating the 250th anniversary of the birth of this local artist of national importance.

This painting of the story of Jesus' physical departure from the earth as he ascended into heaven to be reunited at the right hand of God the Father reminds us that ever since that day, people

have been trying to understand what happened and what this might mean for us as we faithfully seek to follow the way of Christ.

It is at the ascension that Jesus finally draws humanity fully into the presence of God. The eternal Christ, in the midst of blessing his disciples, returns to the place from whence he came; God incarnate, embodied, in human likeness, takes us, humanity, with him.

In this novena, nine days between Ascension and Pentecost, we are praying earnestly for the Holy Spirit to be among us. To make it real to us that God is with us still, blessing us, drawing us into the heart of God's realm, helping us to navigate all the comings and goings of this earthly life, that we might be the visible presence of Christ in the world as the image of God is reflected in us. At least, that's God's hope. How are you getting on with that? Reflecting God's image back into the world in all you think and speak and do?

Rev Sarah

May Prayer Diary

Services this Week

Livestreamed services are marked (L). Please use the button below to view services at the times given or to catch up at anytime.

Sunday 17th May

8 am BCP Holy Communion
10am Family Communion (L)
6pm Time Out

Tuesday 19th May

8 am Morning Prayer

Wednesday 20th May

9am School service
12 pm Holy Communion

Thursday 21st May

3.15pm Together

Friday 22nd May

8am Morning Prayer in Church

Saturday 23rd May

10am Together Extra - Pentecost. Please book to confirm attendance if possible, using [this link](#).

We look forward to welcoming you to St Margaret's Church. ***Parking is available in St Margaret's School car park for weekend services.*** During the week, the children are in school and we cannot use the playground as a car park. Please drive slowly and carefully through the gates. We are grateful for our partnership with the school. The church will be open daily for private prayer, reflection and visiting from 10am to 4pm.

Click here for Livestreaming

Lectionary

This Sunday

Acts 1.6-14 ([KJV](#)) ([NRSVUE](#))

John 17.1-11 ([KJV](#)) ([NRSVUE](#))

Read in traditional language - King James Version - at the 8am service and from the New Revised Standard Version (Updated Edition) at other times.

Church News

please pray for the life of this church as we seek to grow in faith, hope and love

Men's Breakfast & Church Breakfast for all.

Men's Breakfast this morning from 8.30-10.30am. To join the WhatsApp group or find out more, speak to George Woodward.

The next 5th Saturday Church Breakfast for all is on Saturday 30th May 9.30-11am. Sign up using [this link](#).

Children and Families

There's a lot going on over the next couple of weeks. Do join us when you can, and spread the word!

Together - Thursday 21st from 3.15pm (starting at 3.30pm) until 5pm

We are meeting as usual this Thursday in the Church Centre; this month our theme is Ascension. With storytelling, songs, activities and tea with each other we always have a wonderful time!

Together Extra - Saturday 23rd 10 - 11.30am

The bi-monthly 4th Saturday gathering returns, this month we are focusing on Pentecost. The same fun time as Thursdays, with a pastry and fruit brunch to end with. If possible, please book on this via the link below

[Together Extra - Saturday](#)

I am still looking for a couple more volunteers for both of the Together gatherings - please do sign up or speak to me so they can happen fully. Thanks, Rev Helen

Half Term Family Morning 29th May, 10am - 12.30pm

Back for May half term, come along for a morning of activities for all ages, time together and lunch.

As usual, thanks to the Suffolk Community Foundation, this event is free, but donations are always welcome to enable us to continue this work. Please book via the link below:

[Family Morning booking and consent](#)

Sound Desk and Live-streaming - Helpers Required

We are in need of more helpers to operate the sound mixer desk and the livestreaming equipment at our services. Please consider how you can help with this - there have been times recently where we have not been able to include those who join the services online. Please speak to Charles Croydon or Stuart Quinton to find out more. Charles will be running a training session on Friday 29th May between 1 and 3pm. Do come along. If this date isn't suitable, please contact Charles on 07854 776870 and he will endeavour to arrange some future sessions. Thank you .

PCC News

- **Gifts in Wills**

Two legacy gifts totalling just over £12,000 were received by the PCC in late 2025/early 2026 that have enabled the PCC to update the **church's music resources** and embark on a project to introduce **purple church vestments/altar frontals** available alongside the Sarum blue in use during Advent and Lent - this we will seek to crowdfund. The church property sub committee will also be reviewing the various fabric projects emerging from the quinquennial inspections to see how best the remainder of the legacy gifts might be used in the mission of this Church. **New hymn books** have been ordered (Ancient & Modern, Songs and Hymns for refreshing worship) - we'll let you know when we expect to receive them. If you are a crafter and would like to repurpose the old hymnbooks, do let us know. We are grateful to Audrey and Eric Cullingford and the other giver, for their thoughtful gifts. Over 5,000 people each year leave a gift in their will to a Church of England Parish. If you would like to know more about leaving a gift in your will, or would like information on will writing or making your will, you can sign up to Insight [here](#) to gain access to these resources [here](#). Without any expectation of a legacy gift, Rev Sarah or treasurer John are also willing to explain how such gifts are best received and put to good use at St Margaret's.

- **Treework in the Churchyard**

Ipswich Borough Council are responsible for the care of the churchyard and Carol Klug has been working with them to review the care of the trees. Faculty permissions have now been received from the Archdeacon to allow pruning and care of the trees to take place once nesting season has concluded. This will include taking the yews on the main church path back to a narrower size to allow clear passage and access. We expect this will take place in September but will confirm nearer the time.

- **Feedback on New Worshipping Pattern**

Rev Sarah and the PCC would welcome your thoughts on how the new worshipping pattern is settling in. What is going well, what still needs to develop and grow and what might need to stop. You can email your thoughts to office.stmagsips@gmail.com meet Rev Sarah by zoom at 7pm this coming Wednesday 20th May: sign up [here](#) and the zoom link will be emailed to you. Rev Sarah will also be in church on Saturday, 29th May at 11am for anyone who wants to pop along, and similarly, those who would like together with Rev Sarah over coffee after the 10am service on Sunday 31st May. There will also be a chance to meet with George Woodward if you prefer, dates and times to follow - or just catch George for a chat.

Music

We received really positive feedback for the song '[Because He Lives](#)' at Cafe Church last Sunday, with a number of people commenting that they enjoyed the tune, and uplifting words around the

Resurrection. The song was new to many of us, and we hope we will be enjoying it together again, soon.

The choir continue to rehearse on Thursday evenings and Christopher Tinker is always happy to hear from people interested in joining in. For other musicians and singers among us (including those in the choir who are curious), what about this?



**Summer 2026
musicians & singers
Make a Joyful Noise**
offer your instrument and/or your voice
in singing songs of praise to God

We enjoy a wonderful variety of music at St Margaret's and long for all musicians and singers in this community to share their God-given musicality. Each month we'll get together to rehearse and to plan next month's songs, as well as who will play each song/ each service.

We meet in church:

Saturday 23rd May 2.30-4pm
*Rehearsing for 24th May 10am Pentecost Sunday
Worship and 31st May 10am Parish Worship*

Monday 1st June 7-8.30pm
*Rehearsing for 6pm 7th June Prayer and Praise,
10am 14th June Café Church and 28th June 10am
Sunday Worship.*

Monday 29th June 7-8.30pm
*Rehearsing for 6pm 5th July Prayer and Praise,
10am 12th July Café Church and 26th July 10am
Sunday Worship.*

office.stmagsips@gmail.com
www.stmargaretsipswich.org.uk
welcoming people of all faiths and none



Repairs to churchyard wall : Impact on church access (26th- 31st May)

We are grateful that Ipswich Borough Council will soon be undertaking some repairs to the churchyard wall near the pedestrian gate and traffic lights on Bolton Lane. We are expecting the work to take place between 26th & 31st May (half-term), during which temporary lights will be in place and access to the churchyard via the pedestrian gate may be affected.

Period products for the church and the church centre

In 2025, 21% of women and people who menstruate in the UK are struggling to afford period products, affecting an estimated 2.8 million people.

Over the past 3 years we have had free period products in all the toilets in church and the church centre. We now need a top up, there will be a container at the back of church from this Sunday for a couple of weeks to collect new donations. So if you are able to when you go shopping, please do pick a pack of towels or tampons up and drop them off. For hygiene reasons these need to be separately wrapped so the packs can be spilt and those who need them can take what they need. Thanks so much.

Churches Count on Nature

St Margarets is taking part again this year in Churches Count on Nature

The details have now been finalised for the webinars and bookings are open - click [here](#) for more information. [The first webinar](#), about using iNaturalist to record wildlife, is on 26th May 2026 at 12 noon.

Please keep the date of 10 am Saturday 13 June for Churches Count on Nature in St Margaret's Churchyard.

If you are interested in learning more about the health and social cost of climate change, our Eco group suggest you may like to watch [Prof Hugh Montgomery's 12-minute briefing](#). Aimed at people aged 16+ there is a also showing of a 50 minute 2025 film entitled 'The National Emergency Briefing' on 30th May 2026 at 2pm in the Main Lecture Theatre WLT1, University of Suffolk, Waterfront Building, [19-21 Neptune Quay, Ipswich, IP4 1QJ](#)

Thy Kingdom Come 2026



This year's Thy Kingdom Come is all about the presence of God through His spirit. The God who is with us in the everyday – in the joys and sorrows of life (and everything in between) and the One who, through His spirit, longs to reveal Himself to those who do not yet know Him. Over the 11 days we will explore a different Bible story each day, which demonstrates God's transformative presence, power and love at work in the lives of people and places. Our hope is that as we pray for our five people, they will also experience the life-changing love of God and choose to follow Him.

Find out more here: [Thy Kingdom Come 2026 | Thy Kingdom Come](#)

Resources for *all ages* will be available from the 10th of May, so we can join in with this global prayer movement.



Sat 6th June
10am - 4pm
Creative Retreat

With refreshments at 10am, the day begins at 10.30am as we worship together, exploring in scripture, poetry and reflection the theme of 'Creation and Creativity'.

Bring your own preferred creative materials (e.g. paint, stitch, photography), use materials provided or join in with two different guided creative sessions: one in the morning and one after lunch. Spend the day with others or reflectively by yourself as we spend time creating in the company of God, the Creator. Christchurch Park offers space to walk and a light ploughman's lunch will be served (£10 booked in advance).

We'll close with worship at 3.30pm during which you will be asked make an offering of something you have created to be displayed in the church throughout the month of June.

Email the office or scan the QR code to book your place.



office.stmagsips@gmail.com
www.stmargaretsipswich.org.uk
welcoming people of all faiths and none



St. Margaret's Church
IPSWICH

Sign up for the Creative Retreat Day - 6th June

[Click here to sign up.](#)

Sign up for the Summer HolyDay outing to Bury St Edmunds

Click [here](#) to register your interest. Don't forget to add 'extra' people if you are coming along with others.





Sat 18th July

We're all going on a Summer HolyDay

A grand day out in Bury St Edmunds

We'll make our way there either by train or in cars, arriving at the Cathedral from 10.30am with friends from Ipswich All Hallows and Lindbergh Road churches for tea and coffee. At 11am we'll worship together in the Lady Chapel before spending the day at leisure, on retreat or joining in with various activities:

- reflective tour with a Cathedral pilgrim guide
- walk the labyrinth
- lunch in Abbey Gardens (bring a picnic/rug)
- explore the ancient abbey ruins
- 2pm in the Cathedral - a special time for families with younger children
- Choral Evensong 3.30-4.15pm

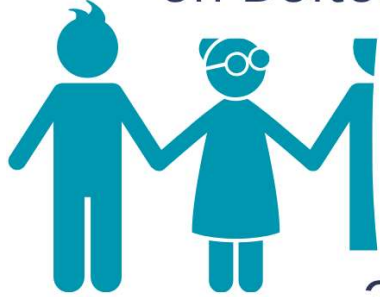
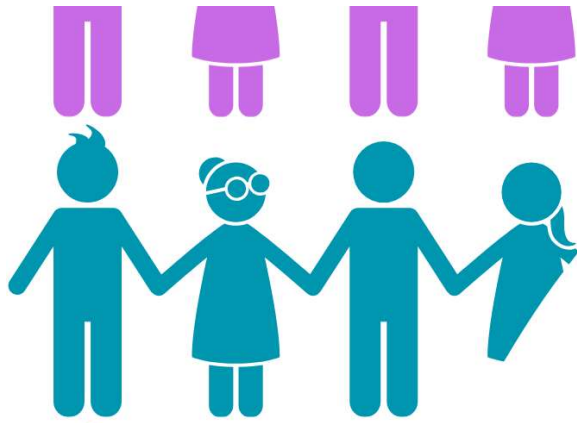
Please register your interest! QR code or go to:
<https://stmargaretsips.churchsuite.com/events/5asvs05>



office.stmagsips@gmail.com
 www.stmargaretsipswich.org.uk
welcoming people of all faiths and none



St. Margaret's Church
IPSWICH



Welcoming people of all faiths and none



Together!

3rd Thursday's
21st May, 18th June,
16th July, 20th August
join us from 3.15pm for a
3.30pm start until 5pm in

St Margaret's Church Centre
on Bolton Lane, just up from the school

Together EXTRA

Saturdays 10.00 - 11.30

23rd May, 25th July,

26th September, 28th November

All are welcome

to this relaxed community for all ages.
Join us for storytelling from the Bible,
activities, songs, prayer
and a meal together





Family Morning

Come and join us for a morning of activities for all ages followed by lunch together

Friday 29th May

10am until 12.30pm

in St Margaret's Church Centre,
Bolton Lane

Arrive when you can and leave when you wish.

Under 16's must be accompanied by an adult

Thanks to funding from the Suffolk Community

Foundation this event is **free**

(although donations to continue this work are gratefully received)

Book via the QR code

for more information email

events.stmagsipswich@gmail.com



Welcoming people of all faiths and none



Thursday

Forum

at Christ Church
Tacket Street (next to Cox Lane car park)

Thursday Lunchtimes

Refreshments at low cost 12 noon - 1.00 pm

A short talk 1.10 - 1.50 pm

You are welcome to either or both



Season 2025/2026

May 7th The Anglia Care Trust; helping and caring for others

Lisa Miles, Volunteer Development Manager

May 14th The History of the Ipswich Society

Chris Deverson, Vice-Chair of the Ipswich Society

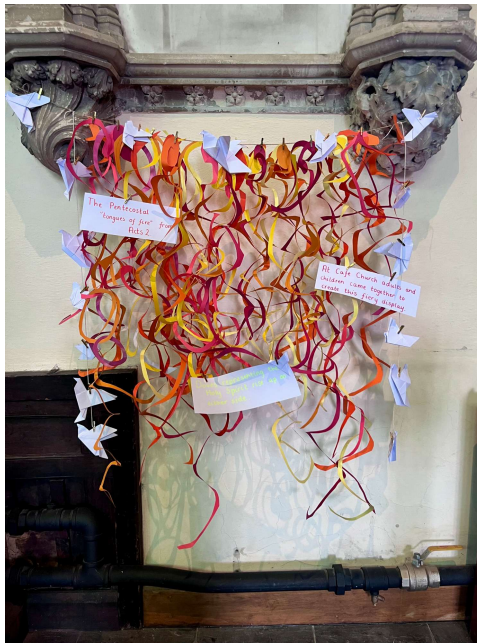
May 21st The Work of a Hospital Chaplain

Forum takes a break now until October 2026. But look out for our Summer Outings.

Oct 1st My passion for Uganda

Alison Brain

Growing Deeper



Thanksgiving

For a busy Cafe Church last week, with children and adults coming together to create a Pentecost display, now visible in church; and fruitful discussions around Pentecost.

For primary school children at St. Margaret's School and across Ipswich, finishing with their SATs exams this week.

Prayer

Praying for our community: residents, visitors, businesses and passers-by this week, as we pray for Cranfield Court, John Belsted Lodge, and Bromeswell Road.

Support

Remember our Pastoral Team is here to support members of the St Margaret's community, whether ill or in need of a friendly listening ear, details can be found towards the bottom of this email.

Social Action

Please remember we have a box at the back of the church all year round to collect contributions of food and toiletries.

Growing Greener

Green Tip of the week : Could you use gentler cleaning products?

A good way to clean up our waterways is to use less aggressive chemical in the home. Detergents and surface cleaners often contain harmful chemicals which are not good for you nor the environment. There are now a wide range of effective cleaners from companies like Ecover which do a great job with gentler chemicals.

With thanks to Revd Richard Stainer.

Forthcoming Services and Events

Sunday 24th May (Pentecost)

8 am BCP Holy Communion

10am Sunday Worship (L)

6pm Choral Evensong (L)

Tuesday 26th May

8 am Morning Prayer

Wednesday 27th May

12 pm Holy Communion

Thursday 28th May

8pm Compline (Zoom)

Friday 29th May

8 am Morning Prayer in Church

10am Family morning in the Church Centre. Please click [here](#) to book.

Saturday 30th May

9am - Church breakfast with food and fellowship and faith-filled conversation for ALL, themed around Pentecost. Please sign up using [this link](#).

Sunday 31st May (Trinity Sunday)

8 am BCP Holy Communion

10am Parish Worship

Tuesday 2nd June

8 am Morning Prayer

10.30am Communion at Norwood

3.30pm Communion at Christchurch Court

Wednesday 3rd June

9am School service

12 pm Holy Communion

Thursday 4th June

8pm Choral Compline

Friday 5th June

8 am Morning Prayer in Church

Saturday 6th June

8.30am - Men's breakfast

10-4om Creative retreat day in Church, including a light lunch. Use [this link](#) to sign up.

Save the Dates

Saturday 18th July

Day Trip / Pilgrimage to Bury St Edmunds with friends from All Hallows Church to include a special service in the Cathedral led by the All Hallows and St Margaret's community, the opportunity to explore Bury St Edmunds for fun, picnics and/or reflective retreat time and the

chance to finish the day attending Choral Evensong in the Cathedral. Please sign up using [this link](#).

Rev Helen will be on a curate placement with Lark Valley and North Bury Team in Thingoe Deanery (combining part of the town and surrounding villages of Bury St Edmunds) from the end of May until the beginning of July.

Offertory

The life and mission of St Margaret's is financially sustained through generous giving. If you have been giving regularly as part of your practice of gratefully living in God's service, thank you. If you're new to the community, or would like to think about celebrating life in this way, you may find the following helpful: we receive no income from 'The Church'... we are the church! So, thank you – for anything and everything that you are able to give in response to God's generosity.

In church you can give in a couple of ways on the day:

- **Collection plate** – during services a collection plate is sometimes passed among the congregation, but you will more often find it at the South door as you leave or arrive. Do use a yellow envelope if you're a tax payer so gift aid may be re-claimed.
- **Tap giving** – during services a tap giving machine is located on the pillar on the west wall, to the left of the bell tower – do consider tapping your card or device. As well as giving regularly, this is also a good way of offering an occasional additional gift.
- **Regular Giving** – St Margaret's is registered with the [Parish Giving Scheme](#), allowing you to be in control of your giving and to give securely and safely online by Direct Debit.
- **Online giving** – If you wish to make a one-off or extra gift online, you can do so securely via the [Parish Giving Scheme](#).
- **Gift Aid** – if you are a tax payer, St Margaret's can claim back the basic tax you have already paid to the government. To make the appropriate declarations, please speak with the treasurer, [John Grierson](#).
- Leaving a **gift in your will** or making a **donation in memory** of a loved one – no matter how large or small, every gift makes a difference. If you would like to talk about this with someone, in confidence, then please consider speaking with the treasurer, [John Grierson](#) or the Vicar, [Sarah](#).

Contact us:

Revd Sarah Geileskey - Vicar

Email: revsarahgeileskey@gmail.com

Address: The Vicarage, 32 Constable Road, IP4 2UW

Telephone: 07841 687879

Sarah's rest days are usually Thursday each week and the second Friday of each month

Revd Helen Prior-Townsend - Curate

Email: helenptstmags@gmail.com

Telephone: 07541 707543

Helen's rest days are usually Monday each week and every fourth Tuesday of each month.

George Woodward - Licensed Lay Minister (Reader)

Email: reader.stmagsips@gmail.com

Telephone: 07990 573258

George's quiet days tend to be Wednesdays and Fridays.

Churchwardens

Bart Bisbal

Email: churchwardens.stmagsips@gmail.com

Telephone: 07495 759203

Office

Email: office.stmagsips@gmail.com

Office Hours: Tuesday, Wednesday and Friday 9.30am - 2.30pm

Number: 07733 609661 and leave a message.

Church Office and Contacts during the Church Administrator's period of Maternity Leave**We are looking forward to Lucy returning to the church office at the end of July 2026.**

We are taking the opportunity to rationalise email addresses. With immediate effect, please use office.stmagsips@gmail.com for all correspondence. We are still trying to maintain the current office opening hours: Tuesday, Wednesday and Fridays 9.30am - 2.30pm but this is not always possible, so if you have a particular reason for visiting the office, do email or call ahead of time to confirm.

Pastoral Support: The Pastoral Care Team are a small group of volunteers who try and support people in a variety of situations by offering a listening ear, a helping hand or by providing useful information. Please click [here](#) for more information or contact Maggie Conder at pastoralteam.stmagsips@gmail.com.

Safeguarding: This parish recognises that the welfare of children, young people and vulnerable adults is paramount and that we have a duty of care when they are in our charge. We will do everything that we can to provide a safe and caring environment whilst they attend our activities. When there is a disclosure of harm or there are concerns about the welfare of any children, young person or vulnerable adult, all adults in our church community are expected to share their concerns and allegations with one of the following:
Carol Klug - Parish Safeguarding Officer. Email safeguarding.stmagsips@gmail.com
Frederike Jacob is our assistant Parish Safeguarding Officer

More information on how you can report any safeguarding concerns is available from The Diocese of St Edmundsbury and Ipswich [here](#)

Newsletter Contents

Please send any items for next week's newsletter to the Church Office (office.stmagsips@gmail.com), ideally by email, by **Thursday lunchtime please**. If you would like to receive this mailing each week please [complete this form https://stmargaretsips.churchsuite.com/connect/mydetails/submit](https://stmargaretsips.churchsuite.com/connect/mydetails/submit)