



Sunday 5th July 2026

Trinity 5



Sometimes you just can't get anything right. Whatever you do it is wrong, even if you do the opposite to something that you were told was wrong before it is still wrong. I know that feeling and I am sure that many of you reading this know it too!

Jesus gives a great example of this in the Gospel reading that we will hear this Sunday (or do click the links further on in the newsletter where the information for the readings is). If we don't dance along when people want is too we are wrong, well what if we don't feel like dancing? No, not on that day. We have felt burdened down and the delight of the dance is not for us. But he reminds all those listening then and now that he will help us carry out burdens however heavy they are, our load will be lightened and hopefully our decisions will be easier because of this.

As a church of people we are also here to help carry each other's burdens to be there for each other when we need to be. To share, to support, to care, to trust, to pray together. As Christians we are called to rely on each other as well as God.

Having that support means many things, not just for the all-important personal stuff but also for the running of our church, this place is not just a building - it is a shared effort for all of us to work together on, to make it stronger, to reach out to people in many different ways. To carry the yoke together in the challenges as well as the joys. Even if we don't all see decisions in the same light we can work together.

Rev Helen

July Prayer Diary

Services this Week

Livestreamed services are marked (L). Please use the button below to view services at the times given or to catch up at anytime.

Sunday 5th July

8 am BCP Holy Communion
10am Family Communion (L)
6pm Prayer & Praise

Tuesday 7th July

8 am Morning Prayer
3pm Communion at Christchurch Court

Wednesday 8th July

9am School service
12 pm Holy Communion
~~7pm Prayer meeting~~

Friday 10th July

8 am Morning Prayer in Church

We look forward to welcoming you to St Margaret's Church. ***Parking is available in St Margaret's School car park for weekend services.*** During the week, the children are in school and we cannot use the playground as a car park. Please drive slowly and carefully through the gates. We are grateful for our partnership with the school. The church will be open daily for private prayer, reflection and visiting from 10am to 4pm.

[Click here for Livestreaming](#)

Lectiionary

This Sunday

Romans 7.15-25 ([KJV](#)) ([NRSVUE](#))
Matthew 11.16-19,25-30 ([KJV](#)) ([NRSVUE](#))

Read in traditional language - King James Version - at the 8am service and from the New Revised Standard Version (Updated Edition) at other times.

Church News

please pray for the life of this church as we seek to grow in faith, hope and love

Music News

Ipswich Music Day

We are again hosting musicians as part of the free music festival across Christchurch Park on **Sunday 5th July 2026 (tomorrow!)**. Please refer to the flyer below for more information. This year we plan to serve refreshments to raise money for Church funds. It would be lovely to offer cakes with the drinks; please contact Alison if you could provide a cake or offer help. Many thanks Alison. alisonthurtle@hotmail.co.uk

Choir

Please continue to pray for our choir director, Christopher Tinker. The initial surgery to treat pancreatic cancer went according to plan however this week the recovery has not gone quite as hoped and he will now be spending longer in hospital than first anticipated. As Christopher is cared for by his medical team, Amanda Lockyer continues to help as a visiting organist over the summer with Theo Geileskey helping out next week (12th July). Choir practice where possible will continue on Thursday evenings, 7-8pm. If you have any queries about music in the meantime, or are thinking about joining or re-joining the choir, do email music.stmagsips@gmail.com

Ink Cartridge recycling

You may notice that the box at the back of church is no longer there. Its good news – the box has been filled and the contents sent to [Recycle4Charity](#), who will recycle them and St Margaret's will receive a small payment for each cartridge that is recycled. A new box will arrive soon so do continue to keep your empty cartridges from home printers and add them to the new box when it arrives. Many thanks Rev Helen

Together in July, and Family Mornings in August

I am looking for 2 volunteers for Thursday 16th July and up to 3 volunteers for Saturday 25th July to help at Together. The Thursday gathering will be in the church centre as usual and the Saturday Together Extra will be in the churchyard. If you have volunteered for Together before and are available, please sign up at the back of church, if you want to help but haven't been before do speak to me

I am also hoping to run two of our ever-popular Family Mornings in August, one on the 7th of August and the other on the 21st. Again if you wish to volunteer do sign up, if its for the first time do chat with me. Thanks, Rev Helen

Carpet cleaner

The rug in the children's area under the tower needs a good clean! Does anyone have a carpet cleaner that we could borrow, or if you have one you could come and clean the rug for us?

Happy to pay the cost of cleaning solution! If you can help please speak to me. Thanks, Rev Helen

NOW IS THE TIME TO SIGN UP

Summer HolyDay, Saturday 18th July 10-4pm

A day out in Bury St Edmunds! With worship, activities and time to explore. Details on the website [here](#) (or later in this newsletter). To register your interest, please click here or add your details to the sheet at the back of church.





Sat 18th July

We're all going on a Summer HolyDay

A grand day out in Bury St Edmunds

We'll make our way there either by train or in cars, arriving at the Cathedral from 10.30am with friends from Ipswich All Hallows and Lindbergh Road churches for tea and coffee. At 11am we'll worship together in the Lady Chapel before spending the day at leisure, on retreat or joining in with various activities:

- reflective tour with a Cathedral pilgrim guide
- walk the labyrinth
- lunch in Abbey Gardens (bring a picnic/rug)
- explore the ancient abbey ruins
- 2pm in the Cathedral - a special time for families with younger children
- Choral Evensong 3.30-4.15pm

Please register your interest! QR code or go to:
<https://stmargaretsips.churchsuite.com/events/5asvs05>



office.stmagsips@gmail.com
 www.stmargaretsipswich.org.uk
welcoming people of all faiths and none



St. Margaret's Church
IPSWICH

Together, we are listening: Diocesan vision and strategy

Bishop Joanne and team are beginning the process of refreshing the diocesan vision and strategy. This will build on 'Growing in God'. They aim to discern where the Holy Spirit is at work in the Church of England in Suffolk, and where God is leading us. To hear Bishop Joanne talking more about this, please click [here](#). To read more, please click [here](#).

Living God,

Speak to your Church in this season of listening and deepen our life in Christ.

*As we give thanks for the growth you have begun,
open our hearts to your voice
and lead us by your Spirit into the future you prepare.
Amen.*

A series of prayer events will take place across the diocese, focusing on **prayer** and **listening**:

- what are our **gifts**?
- what are our **resources**?
- what are our **challenges**?
- what are the **opportunities ahead**?

One of the prayer events will take place at **St. Margaret's on 28th July**, from **7-9pm**, led by **Archdeacon Sam**.

Vicar Sarah adds 'If we ask these questions of St Margaret's and our church community, how would you answer them?'

Archidiaconal Boundary Review

In the Church of England structures, St Margaret's Church is a 'single parish benefice'. We are one of 12,500 individual charities that make up the Church of England. We have a relationship with The Diocese of St Edmundsbury and Ipswich, the national Church of England (including General Synod - elected by members of Deanery Synods) and The Charity Commission.

A 'Benefice' may consist of one or more parishes which are governed by a Parochial Church Council (PCC).

A group of Benefices form a Deanery (with people elected by PCCs to meet as a Deanery Synod)). A group of Deaneries form an Archdeaconry, with a number of Archdeacons forming a Diocese, of which there are 42 in the Church of England. Clergy members of Diocesan Synods are elected by clergy, non-ordained (lay) members of Diocesan Synod are elected by lay members of Deanery Synod). With the exception of the Lowestoft area which is in Norwich Diocese, the Diocese of St Edmundsbury and Ipswich largely covers the civic County of Suffolk, itself divided into boroughs, districts, towns and parishes.

In Suffolk there are three Archdeacons: Suffolk, Sudbury and Ipswich. Ipswich is unique in the Church of England - there is currently only one deanery in the Archdeaconry of Ipswich. The archidiaconal boundaries are currently being reviewed with the expectation that by the end of this year, our Bishop will redistribute the existing 16 deaneries, around 120 stipendiary clergy and other ministers, 480+ churches and 680,000+ people more equitably among the three Archdeacons.

If you have any thoughts or observations you would like to share with the Vicar about this we can make sure they are part of the process that determines the new boundaries.

Pentecostal Pray-ers

Remember that our lay reader George is gathering names of those who are interested in engaging with a prayerful push to pray. We have a good number signed up already but George hasn't yet reached his prophetic 50 pray-ers. Do email him at reader.stmagsips@gmail.com to find out more.

Rev Sarah

Feedback following the changes to our worshipping pattern

Thank you to those of you who shared your thoughts and observations regarding the new worship pattern that was introduced in January. The PCC will give it further thought when they meet in July. In the

meantime, given the low numbers attending, I will no longer be running a monthly zoom compline service on the fourth Thursday of the month and the Wednesday evening prayer meeting is also stopping with immediate effect.

Rev Sarah



Ipswich Music Day

Sunday 5th July

We love being a venue for this free event in the Ipswich calendar.

1pm
Welcome and Introduction

1.10-1.55pm
South Suffolk Youth Jazz

2.05-2.35pm
Ipswich Choral Society

2.40-3.10pm
Ipswich Hospital Community Choir

3.15-3.45pm
Felixstowe Harmonies

3.50-4.35pm
Martlesham Brass

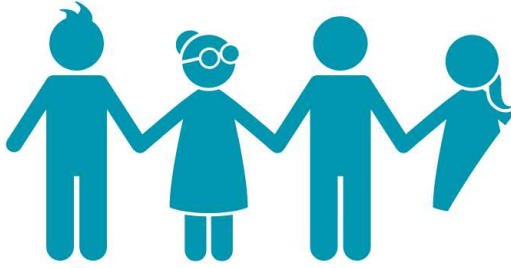
office.stmagsips@gmail.com
www.stmargaretsipswich.org.uk
welcoming people of all faiths and none



St. Margaret's Church
I P S W I C H



Together!



Thursday 16th July



3.30pm start until 5pm in

St Margaret's Church Centre
on Bolton Lane, just up from the
school



All are welcome

to this relaxed community for all ages.



Join us for storytelling from the Bible,
activities, songs, prayer
and a meal together



Welcoming people of all faiths and none





Together **EXTRA** Churchyard Edition

25th July, 10 - 11.30am

Meet in St Margaret's
churchyard by the church
entrance

All are welcome

to this relaxed community for all
ages. Join us for storytelling,
activities, and brunch

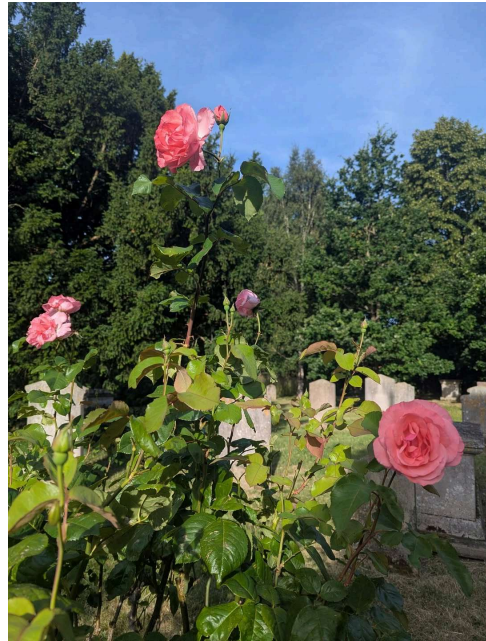
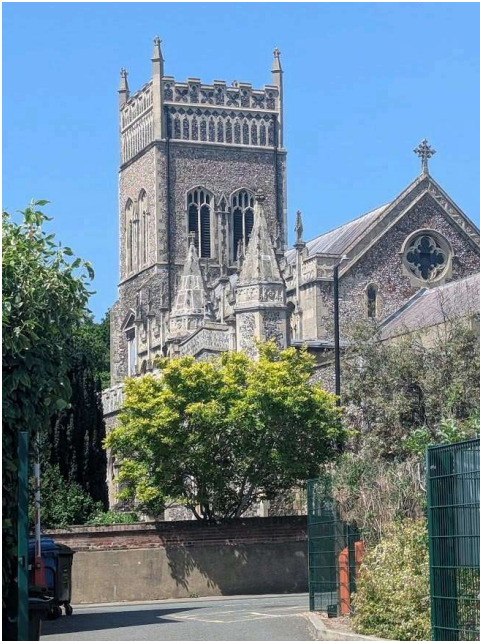
It's preferable to book on this
session, this can be done via the
QR code or emailing
events.stmagsips@gmail.com

Family, Faith and Food

Welcoming people of all faiths and none



Growing Deeper



Thanksgiving

Giving thanks for Rev Helen's ministry, as she returns from curate placement with Lark Valley and North Bury Team in Thingoe Deanery (combining part of the town and surrounding villages of Bury St Edmunds).

Giving thanks for the basics we take for granted: our homes, toilets, fresh water and nutritious food.

Prayer

Praying for our community: residents, visitors, businesses and passers-by this week, as we pray for Anglesea Road, Ivory Street, and Broughton Road.

Support

Remember our Pastoral Team is here to support members of the St Margaret's community, whether ill or in need of a friendly listening ear, details can be found towards the bottom of this email.

Social Action

Please remember we have a box at the back of the church all year round to collect contributions of food and toiletries.

Growing Greener

Green Tip of the week : Make more use of your microwave or air fryer

There is a lot of false information out there about the climate crisis. Major political parties are rowing back on their commitment to net zero and some are trying to deny we are in a climate emergency. To get some hard scientific facts about what is happening it is worth looking for a 'People's Emergency Briefing happening somewhere near you. The film is 50 minutes about the

effects of climate change and there is usually a discussion afterwards about what we should do about it. More information at <https://www.nebriefing.org/screening-map>

With thanks to Revd Richard Stainer.

Loving God · Care for Creation · Love Our Global Neighbours

Forthcoming Services and Events

Sunday 12th July

8 am BCP Holy Communion

10am Cafe church

6pm Choral communion (L)

Monday 13th July

School concert - all day

Tuesday 14th July

8 am Morning Prayer

Wednesday 15th July

9am School service

12 pm Holy Communion followed by soup

2pm School service - Leaver's service

Thursday 16th July

3.15-5pm Together

Friday 17th July

8 am Morning Prayer in Church

Saturday 18th July

8.30am Men's breakfast

10-4pm Summer HolyDay / Day Trip/ Pilgrimage to Bury St Edmunds with friends from All Hallows Church to include a special service in the Cathedral led by the All Hallows and St Margaret's community, the opportunity to explore Bury St Edmunds for fun, picnics and/or reflective retreat time and the chance to finish the day attending Choral Evensong in the Cathedral. Please sign up using [this link](#).

Sunday 19th July

8 am BCP Holy Communion

10am Family Communion (L)

6pm Time out

Tuesday 21st July

8 am Morning Prayer

Wednesday 22nd July

12 pm Holy Communion

Friday 24th July

8 am Morning Prayer in Church

Saturday 25th July

8.30am Men's breakfast

10-11.30am Together Extra in the churchyard, on the theme of light

Offertory

The life and mission of St Margaret's is financially sustained through generous giving. If you have been giving regularly as part of your practice of gratefully living in God's service, thank you. If you're new to the community, or would like to think about celebrating life in this way, you may find the following helpful: we receive no income from 'The Church'... we are the church! So, thank you – for anything and everything that you are able to give in response to God's generosity.

In church you can give in a couple of ways on the day:

- **Collection plate** – during services a collection plate is sometimes passed among the congregation, but you will more often find it at the South door as you leave or arrive. Do use a yellow envelope if you're a tax payer so gift aid may be re-claimed.
- **Tap giving** – during services a tap giving machine is located on the pillar on the west wall, to the left of the bell tower – do consider tapping your card or device. As well as giving regularly, this is also a good way of offering an occasional additional gift.
- **Regular Giving** – St Margaret's is registered with the [Parish Giving Scheme](#), allowing you to be in control of your giving and to give securely and safely online by Direct Debit.
- **Online giving** – If you wish to make a one-off or extra gift online, you can do so securely via the [Parish Giving Scheme](#).
- **Gift Aid** – if you are a tax payer, St Margaret's can claim back the basic tax you have already paid to the government. To make the appropriate declarations, please speak with the treasurer, [John Grierson](#).
- Leaving a **gift in your will** or making a **donation in memory** of a loved one – no matter how large or small, every gift makes a difference. If you would like to talk about this with someone, in confidence, then please consider speaking with the treasurer, [John Grierson](#) or the Vicar, [Sarah](#).

Contact us:

Revd Sarah Geileskey - Vicar

Email: revsarahgeileskey@gmail.com

Address: The Vicarage, 32 Constable Road, IP4 2UW

Telephone: 07841 687879

Sarah's rest days are usually Thursday each week and the second Friday of each month

Revd Helen Prior-Townsend - Curate

Email: helenptstmags@gmail.com

Telephone: 07541 707543

Helen's rest days are usually Monday each week and every fourth Tuesday of each month.

George Woodward - Licensed Lay Minister (Reader)

Email: reader.stmagsips@gmail.com

Telephone: 07990 573258

George's quiet days tend to be Wednesdays and Fridays.

Churchwardens

Bart Bisbal

Email: churchwardens.stmagsips@gmail.com

Telephone: 07495 759203

Office

Email: office.stmagsips@gmail.com

Office Hours: Tuesday, Wednesday and Friday 9.30am - 2.30pm

Number: 07733 609661 and leave a message.

Church Office and Contacts during the Church Administrator's period of Maternity Leave

We are looking forward to Lucy returning to the church office at the end of July 2026.

We are taking the opportunity to rationalise email addresses. With immediate effect, please use office.stmagsips@gmail.com for all correspondence. We are still trying to maintain the current office opening hours: Tuesday, Wednesday and Fridays 9.30am - 2.30pm but this is not always possible, so if you have a particular reason for visiting the office, do email or call ahead of time to confirm.

Pastoral Support: The Pastoral Care Team are a small group of volunteers who try and support people in a variety of situations by offering a listening ear, a helping hand or by providing useful information. Please click [here](#) for more information or contact Maggie Conder at pastoralteam.stmagsips@gmail.com.

Safeguarding: This parish recognises that the welfare of children, young people and vulnerable adults is paramount and that we have a duty of care when they are in our charge. We will do everything that we can to provide a safe and caring environment whilst they attend our activities. When there is a disclosure of harm or there are concerns about the welfare of any children, young person or vulnerable adult, all adults in our church community are expected to share their concerns and allegations with one of the following:

Carol Klug - Parish Safeguarding Officer. Email safeguarding.stmagsips@gmail.com

Frederike Jacob is our assistant Parish Safeguarding Officer

More information on how you can report any safeguarding concerns is available from The Diocese of St Edmundsbury and Ipswich [here](#)

Newsletter Contents

Please send any items for next week's newsletter to the Church Office (office.stmagsips@gmail.com), ideally by email, by **Thursday lunchtime please**. If you would like to receive this mailing each week please [complete this form](https://stmargaretsips.churchsuite.com/connect/mydetails/submit) <https://stmargaretsips.churchsuite.com/connect/mydetails/submit>